



Foto 1_Appartamento sub. 8 via murri 8



Foto 2_Su Via Murri (Via dal Prato)



Foto 3_Appartamento sub. 8 via murri 8 - portico



Foto 04_Prospetto laterale



Foto 05_prospetto laterale



Foto 06_Prospetti laterali



Foto 07_Bocca di lupo

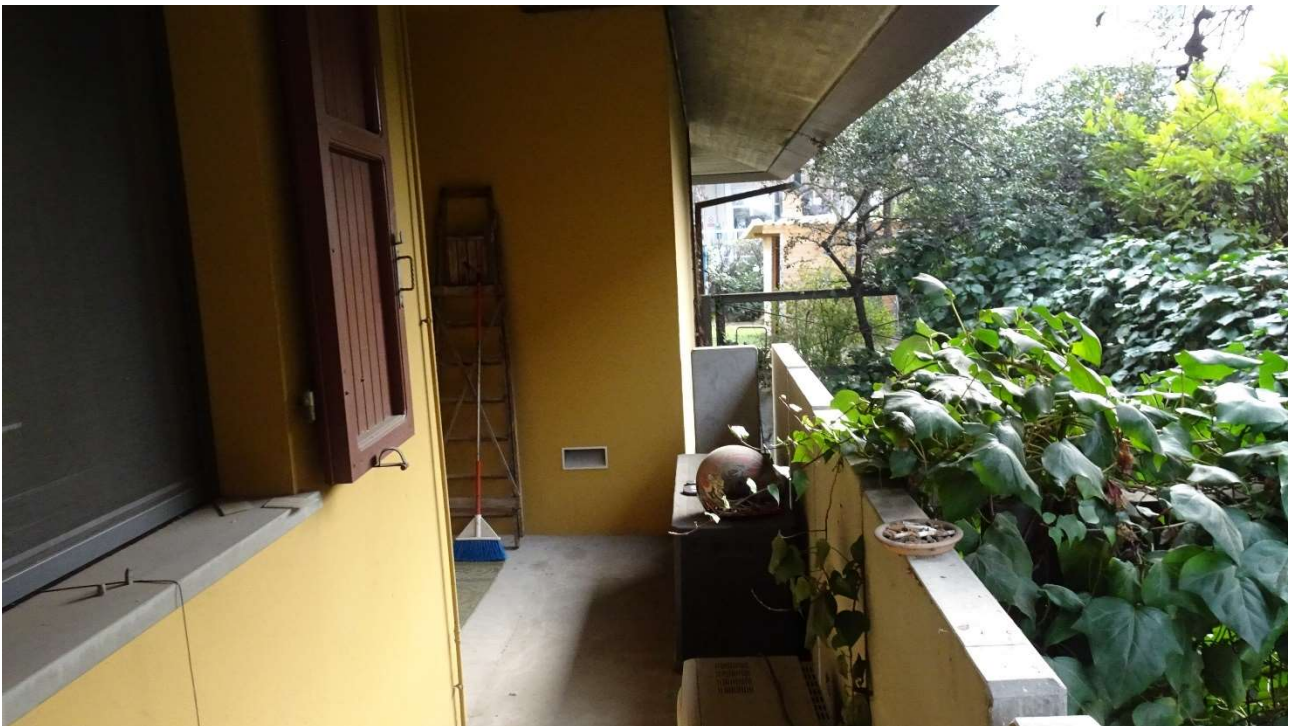


Foto 08_balcone

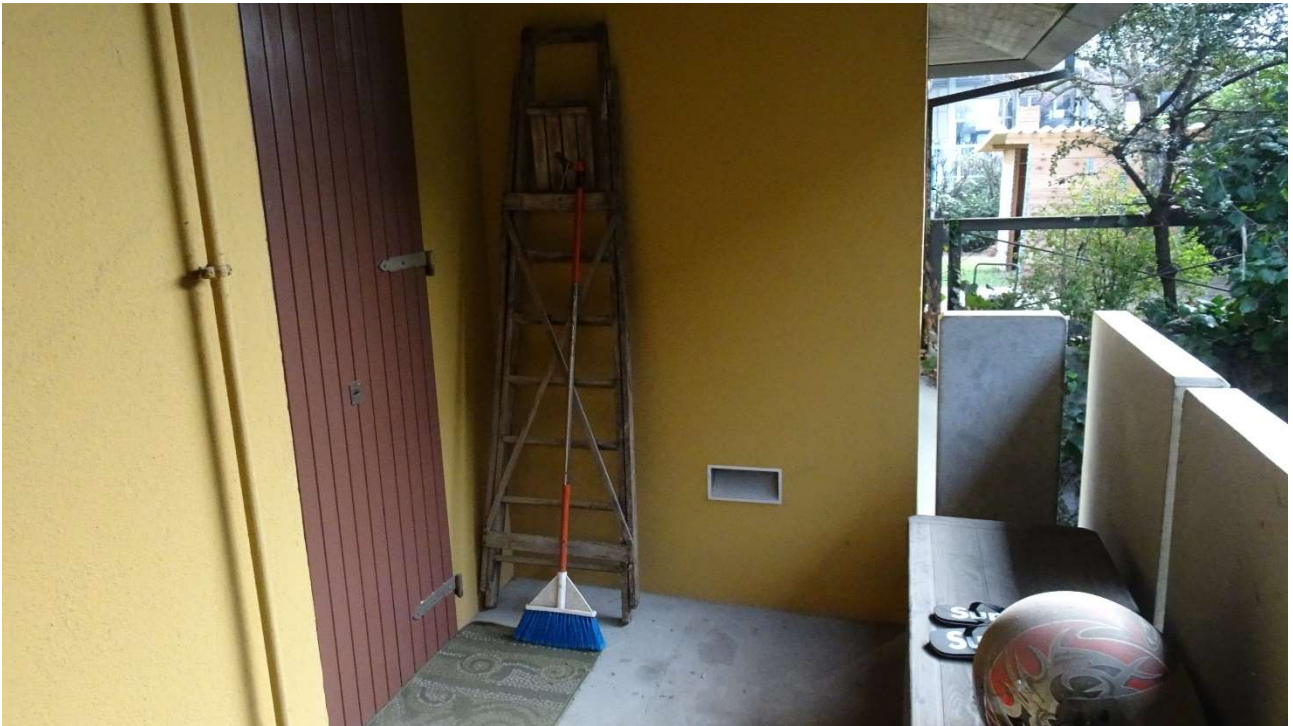


Foto 09_balcone



Foto 10_prospetto laterale



Foto 11_portico



Foto 12_Su Via Murri 6 (via dal prato)



Foto 13_Particolare corte laterale piano S1



Foto 14_CIVICO SUB 8



Foto 15_Interno appartamento sub 8

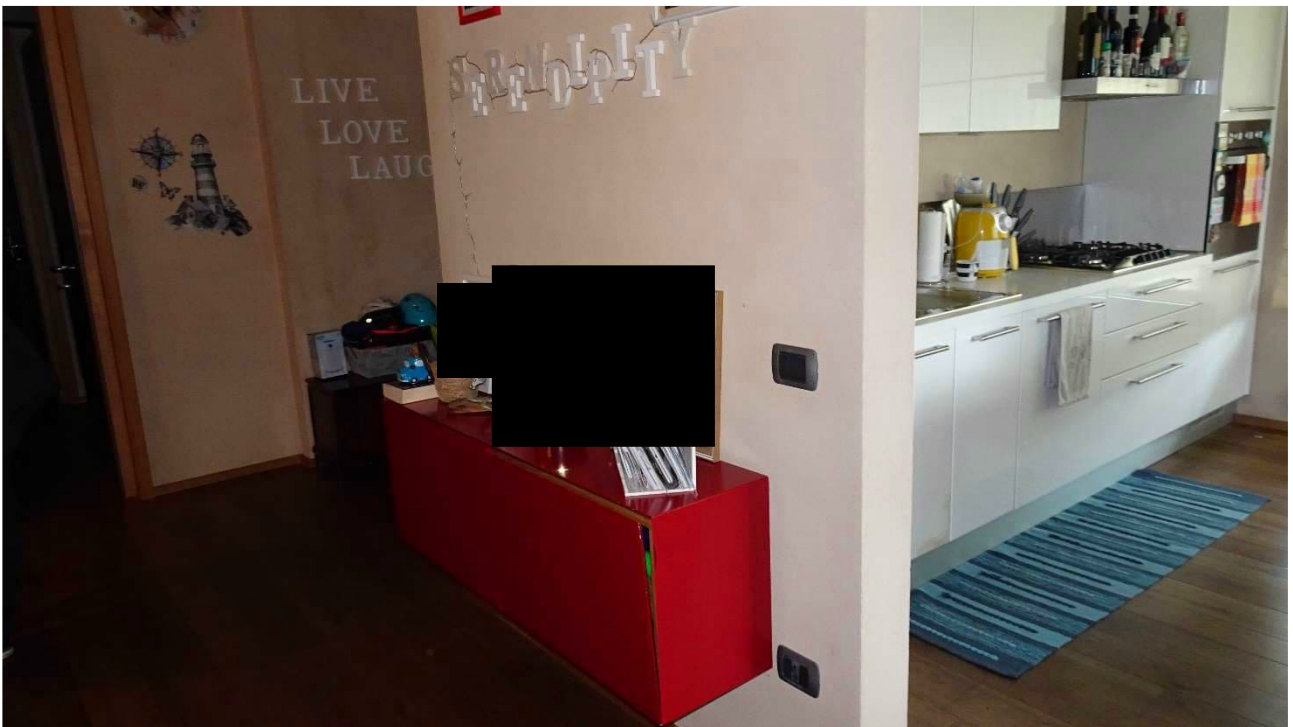


Foto 16_cucina



Foto 17_particolare soggiorno

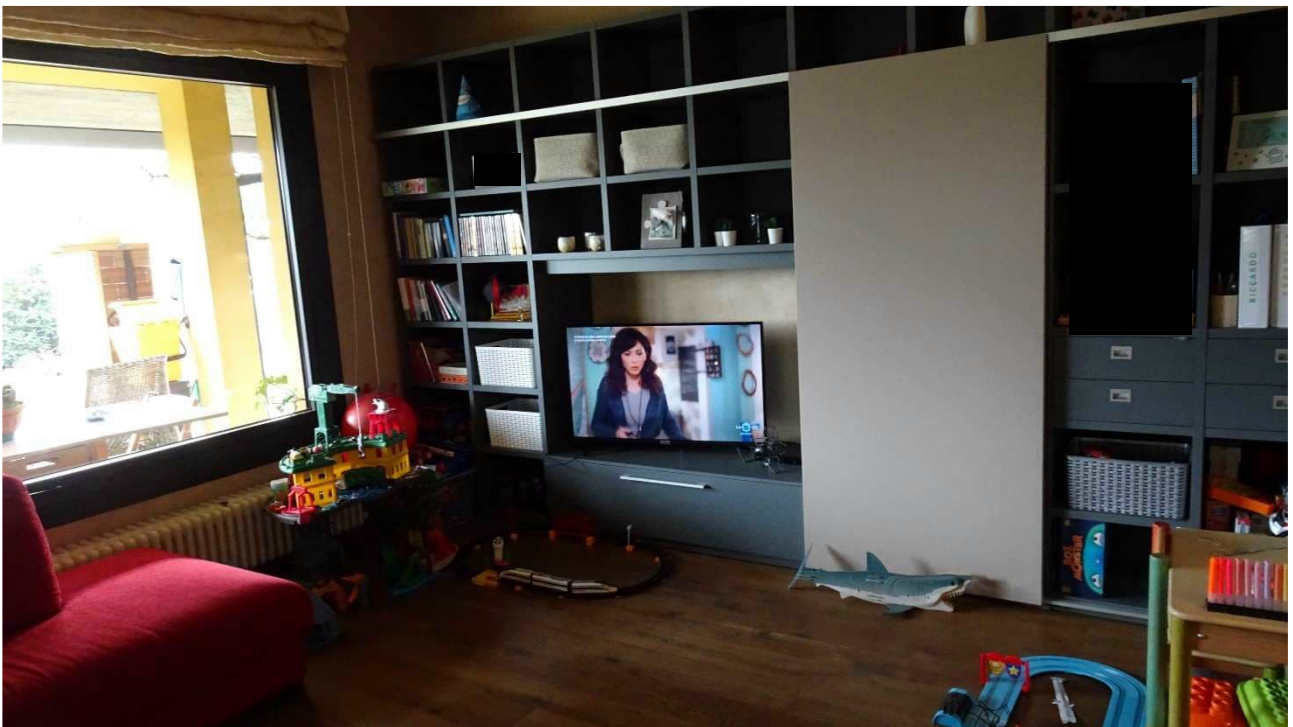


Foto 18_soggiorno



Foto 19_soggiorno



Foto 20_bagno



Foto 21_bagno

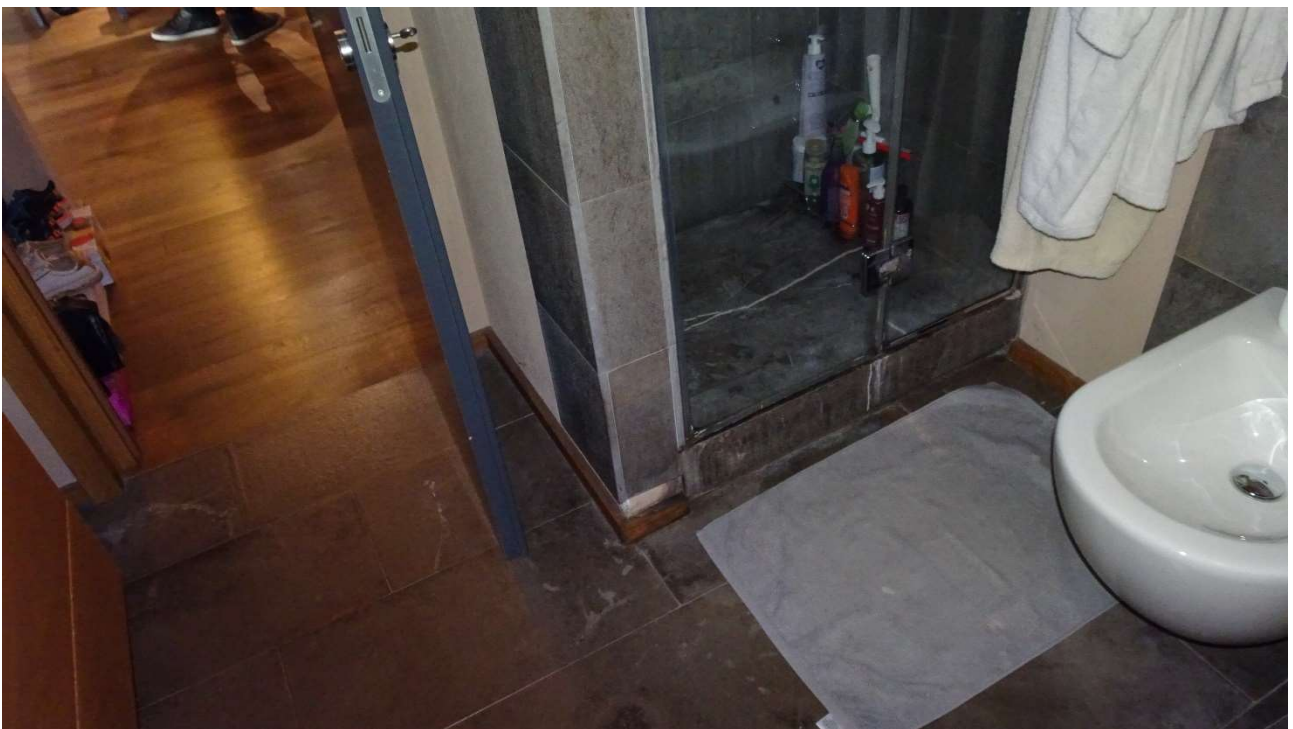


Foto 22_particolare bagno



Foto 23_letto



Foto 24_letto

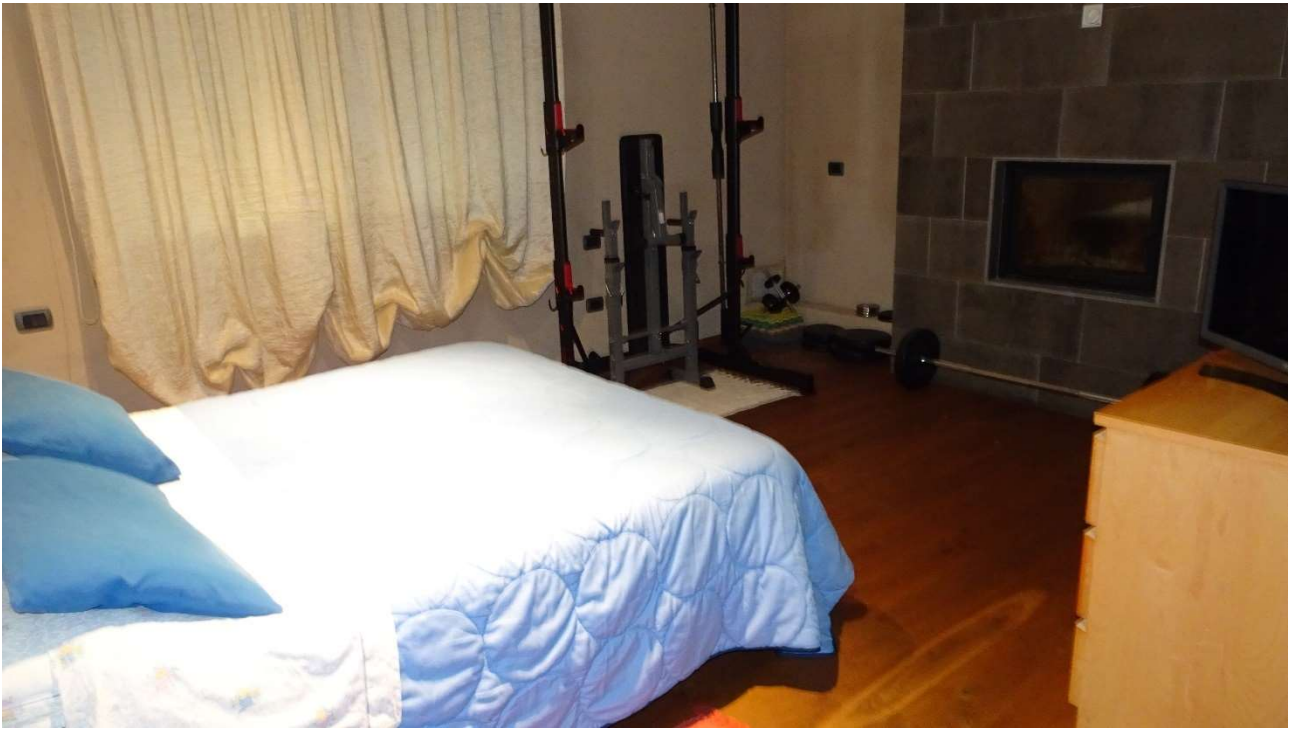


Foto 25_letto

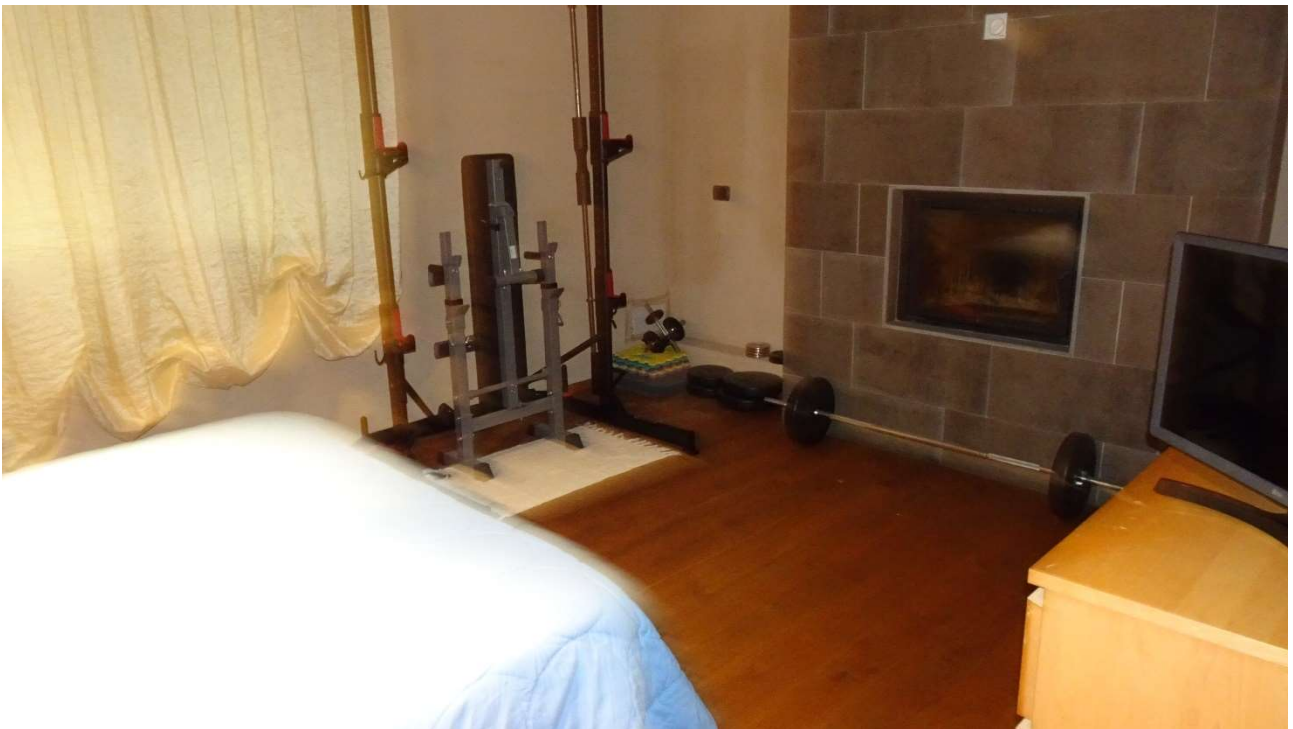


Foto 26_letto



Foto 27_guardaroba



Foto 28_bagno



Foto 29_soggiorno



Foto 30_soggiorno

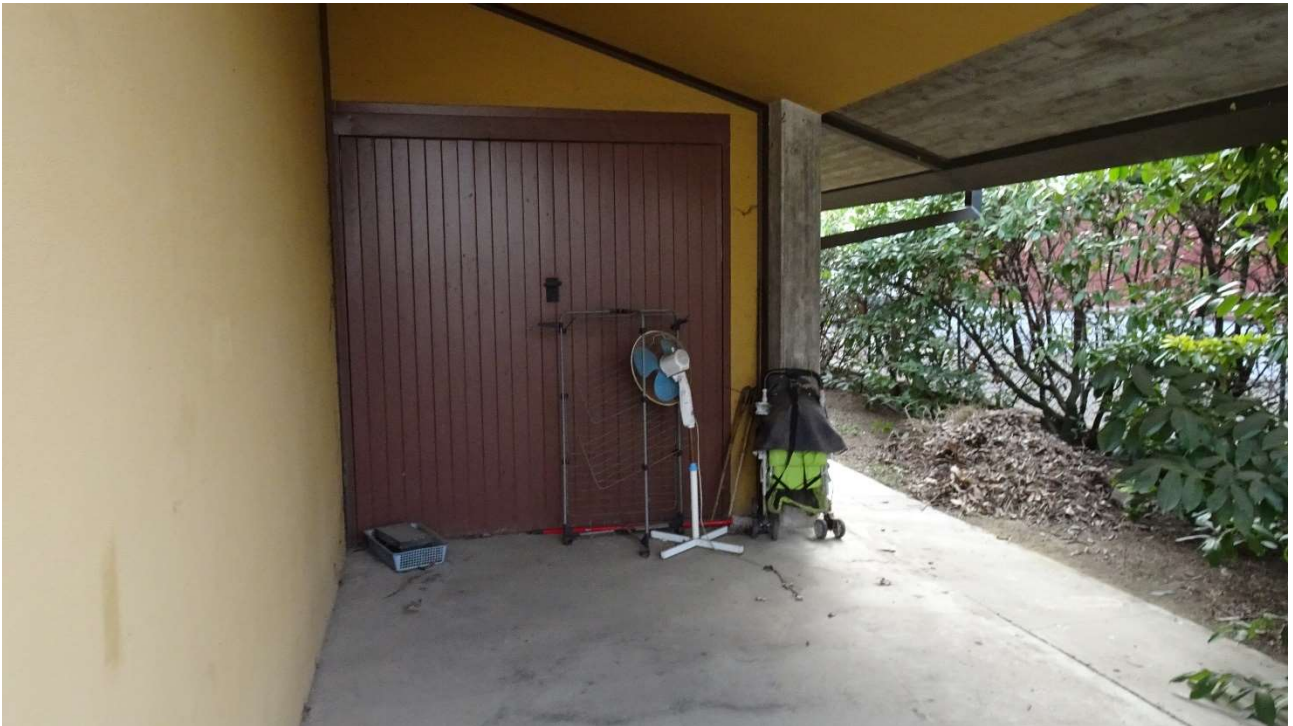


Foto 31_Ingresso garage sub. 2



Foto 32_garage



Foto 33_Garage sub 10

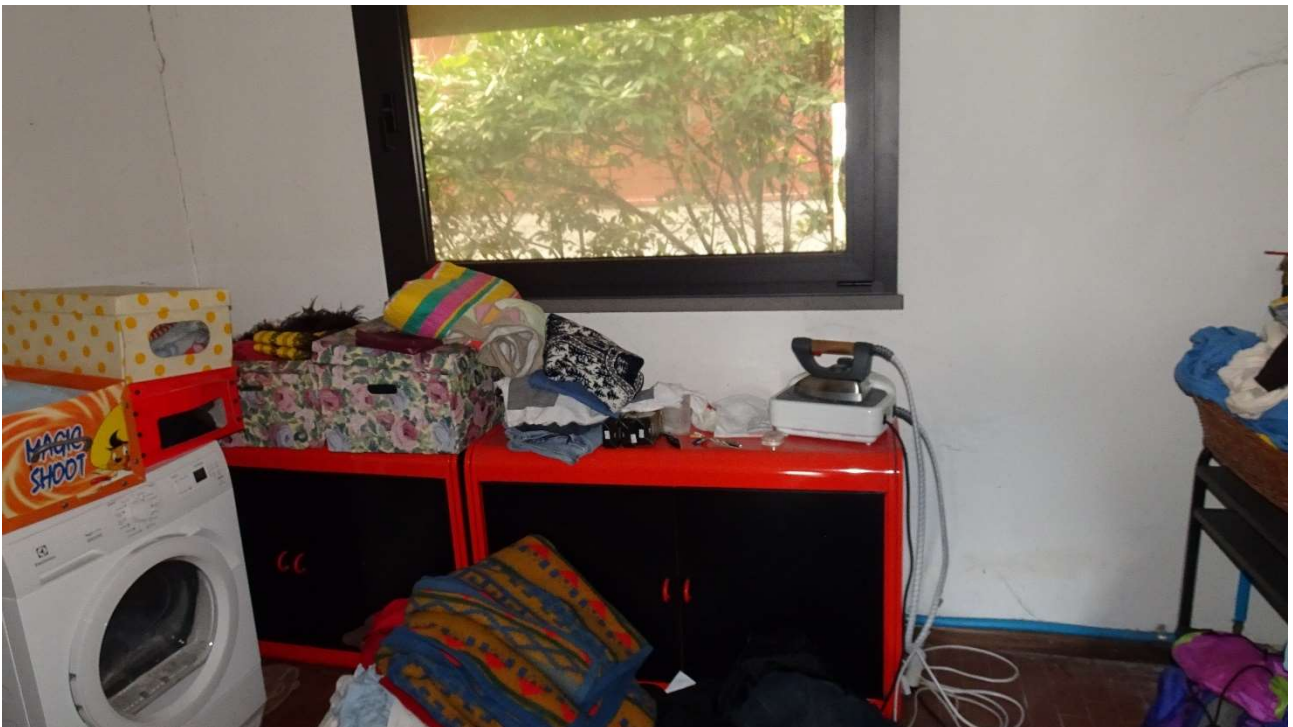


Foto 34_Interno garage sub 2



Foto 35_ Idem con nuovo locale tecnico accessibile dall'esterno



Foto 36_lavanderia

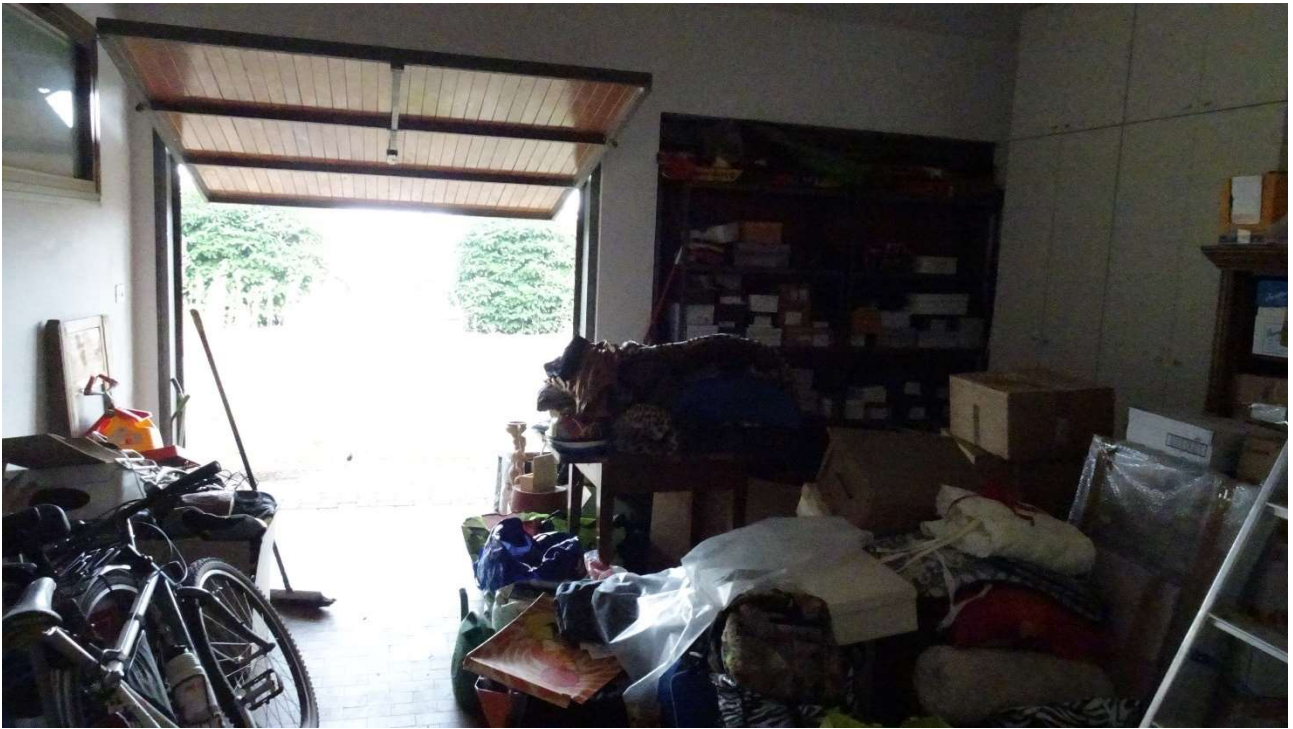


Foto 37_Garage sub 3



Foto 38_Prospetto garages



Foto 39_Civico su via murri (via dal prato)



Foto 40_Portico su via murri 6

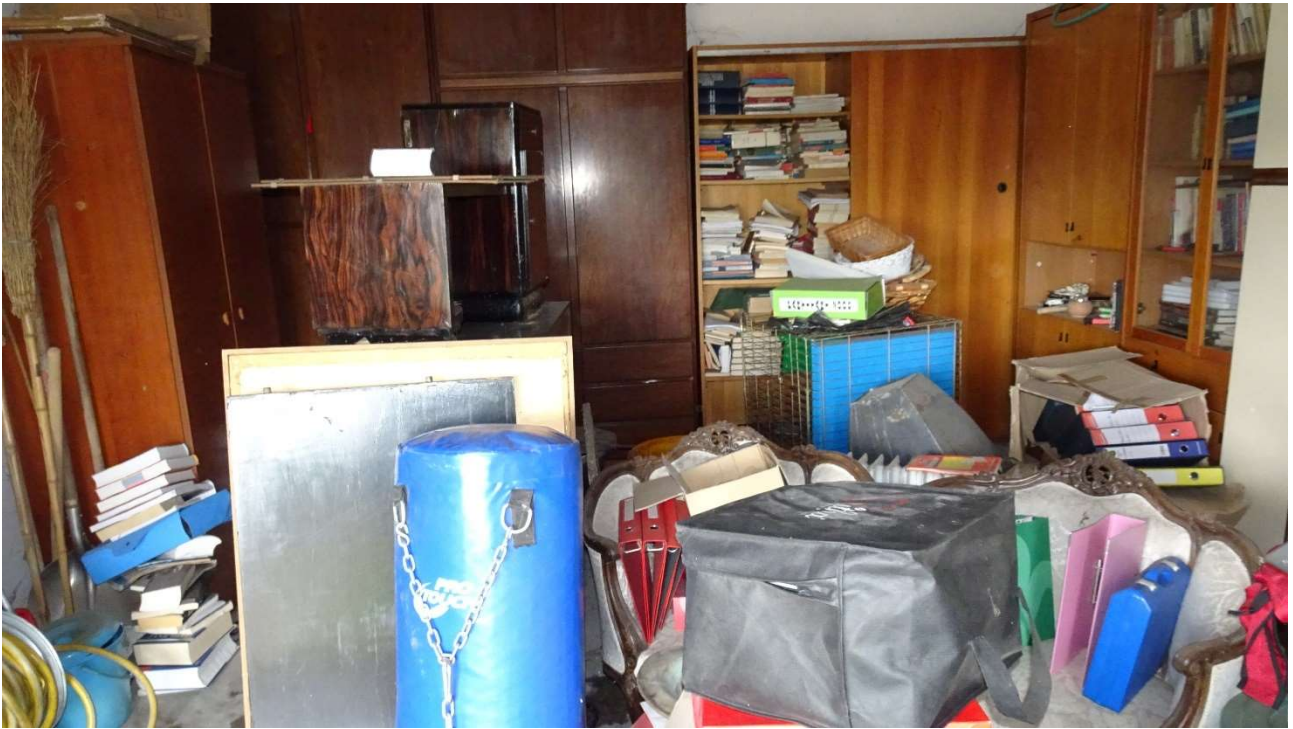


Foto 41_garage



Foto 42_Garage sub 3



Foto 43_ Interno portico

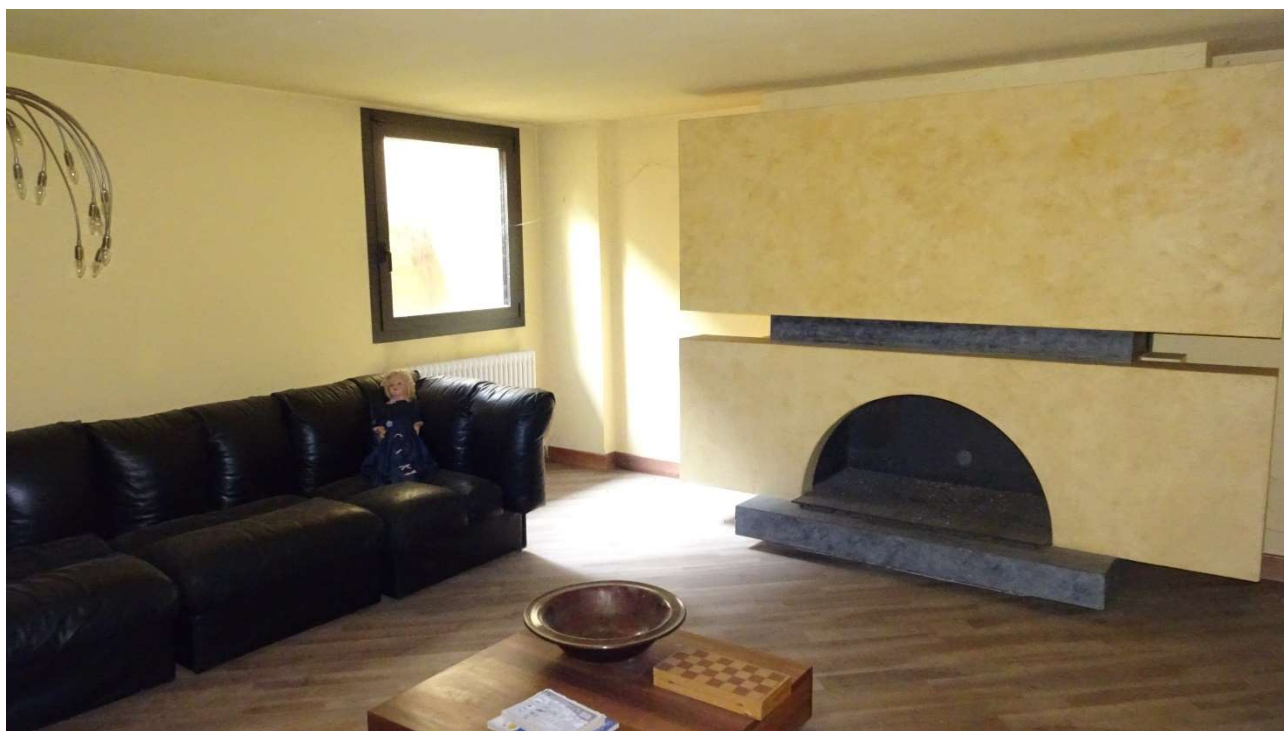


Foto 44_ Interno cantine



Foto 45_interno cantine



Foto 46_interno cantine

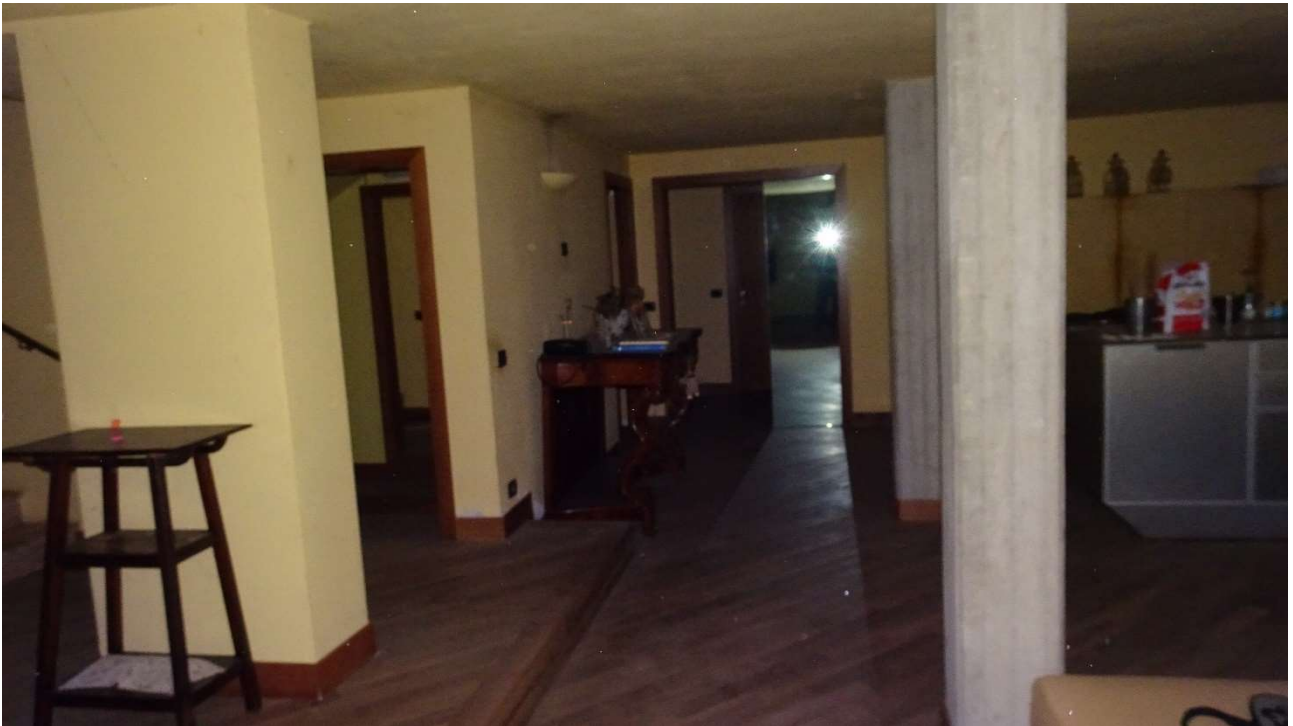


Foto 47_interno cantine



Foto 48_scala cantine



Foto 49_interno cantine

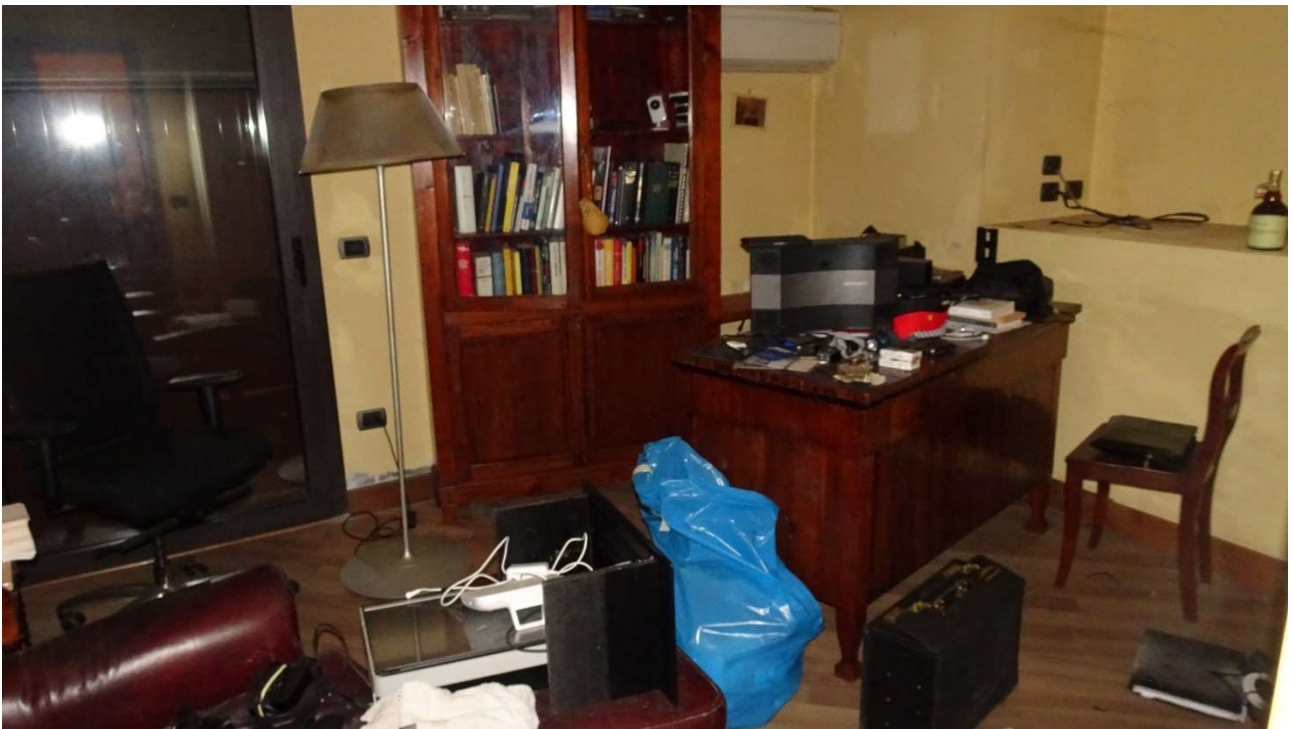


Foto 50_interno cantine

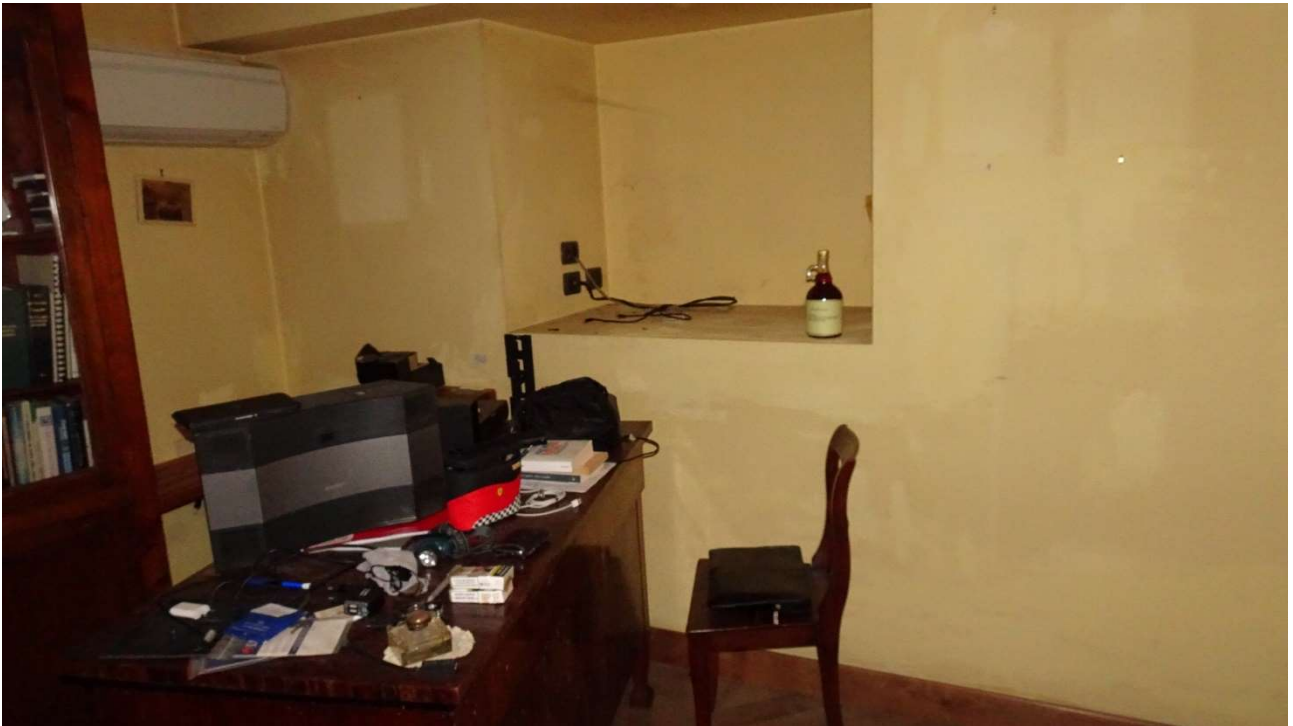


Foto 51_interno cantine

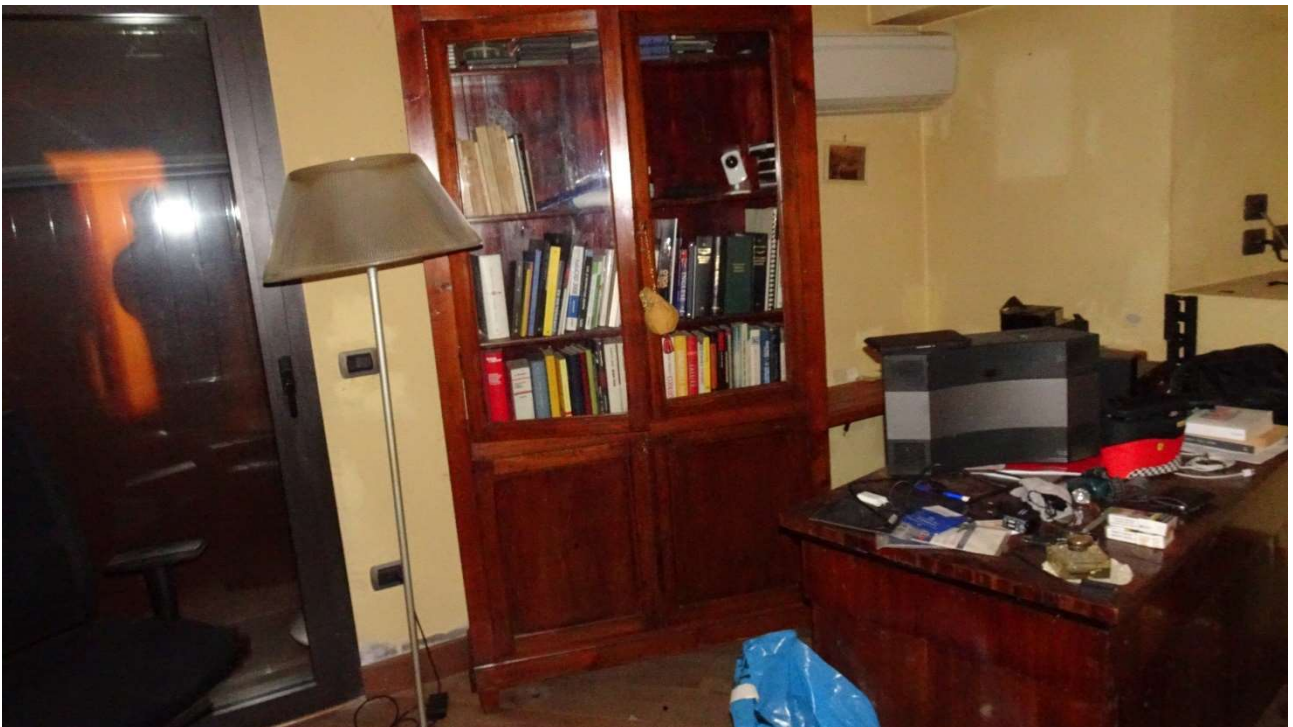


Foto 52_interno cantine



Foto 53_interno cantine



Foto 54_bagno cantine



Foto 55_interno cantine

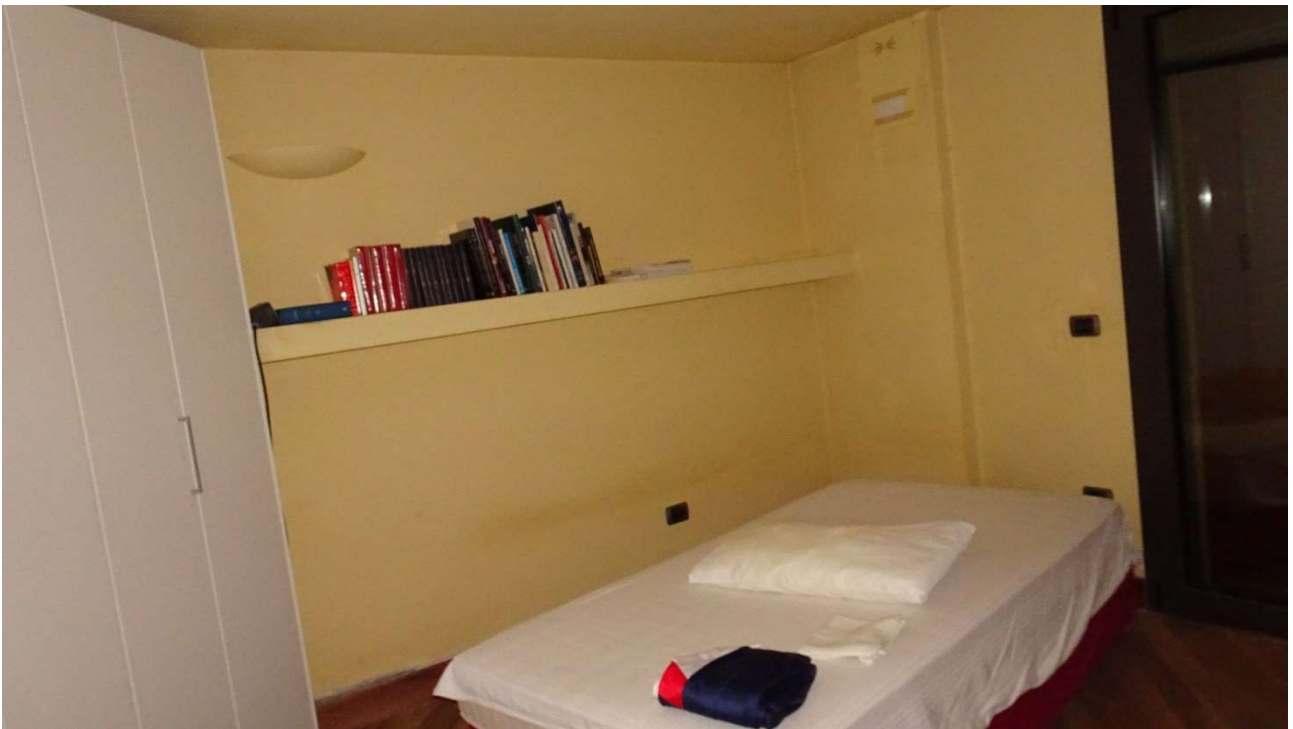


Foto 56_interno cantine

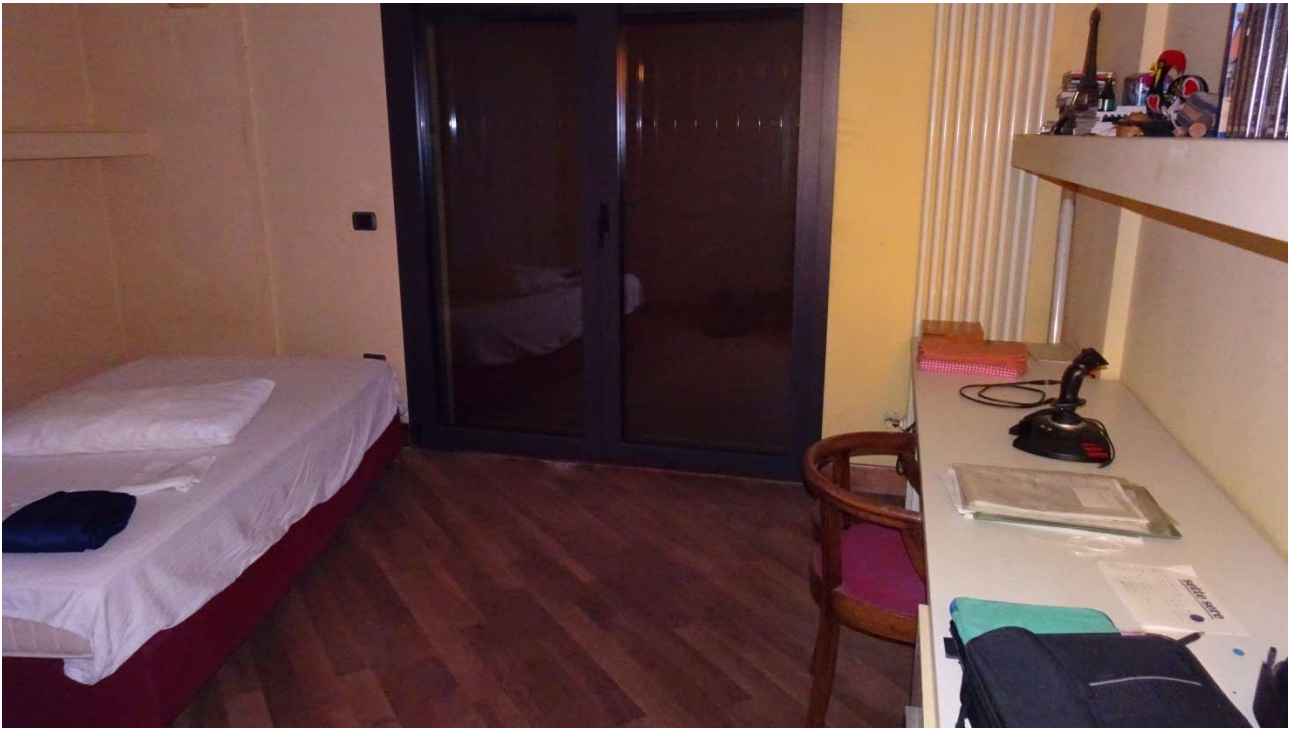


Foto 57_interno cantine



Foto 58_Cantina uso cucina



Foto 59_Soggiorno primo piano

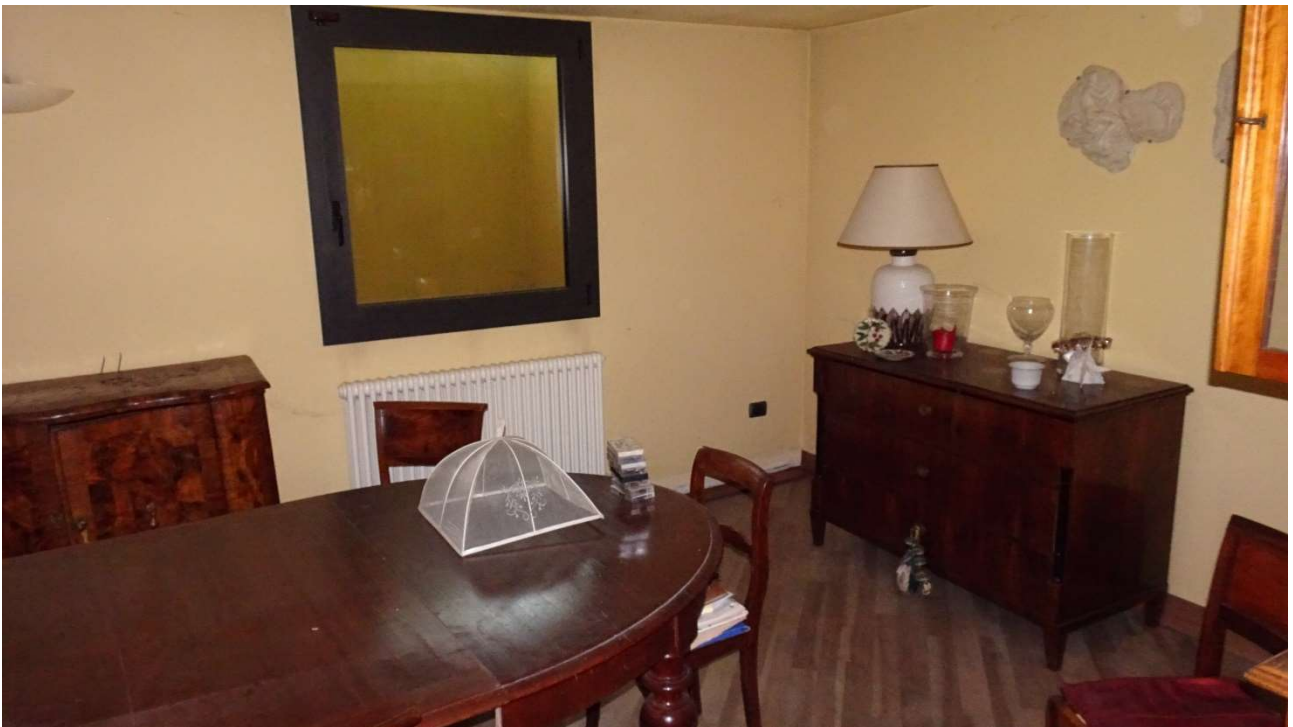


Foto 60_soggiorno primo piano



Foto 61_soggiorno primo piano



Foto 62_cucina primo piano



Foto 63_disimpegno primo piano

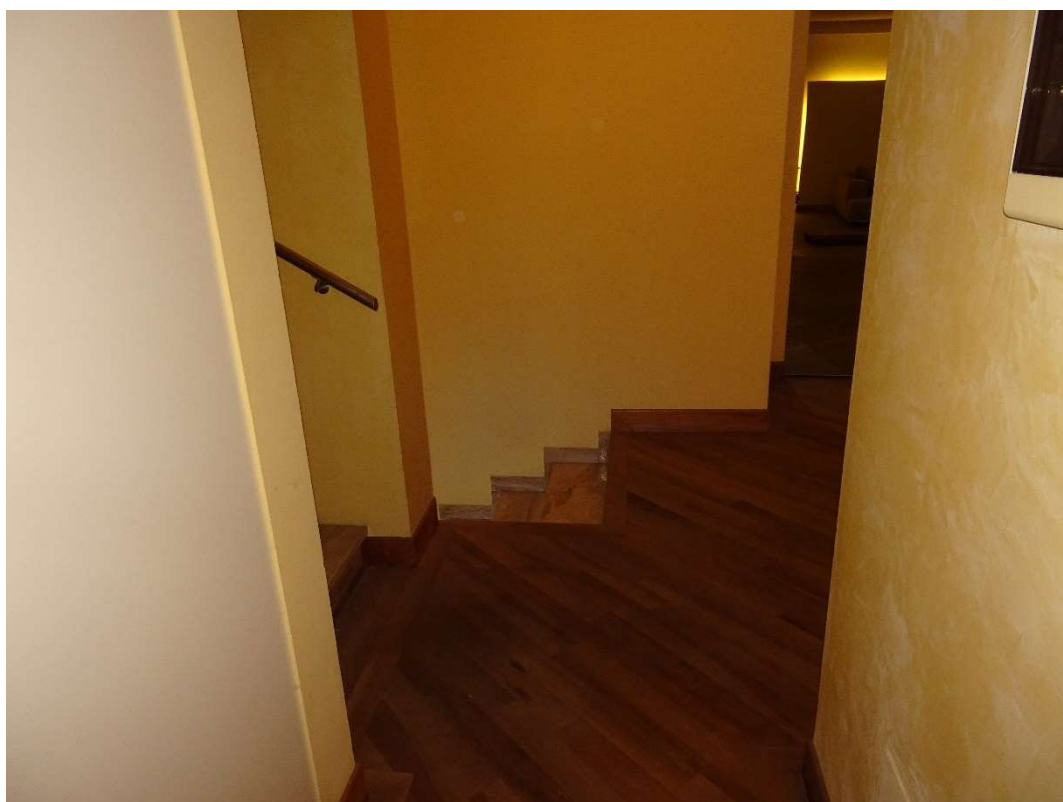


Foto 64_scale primo piano



Foto 65_interno primo piano



Foto 66_interno primo piano



Foto 67_scala primo piano



68_bagno



Foto 69_bagno

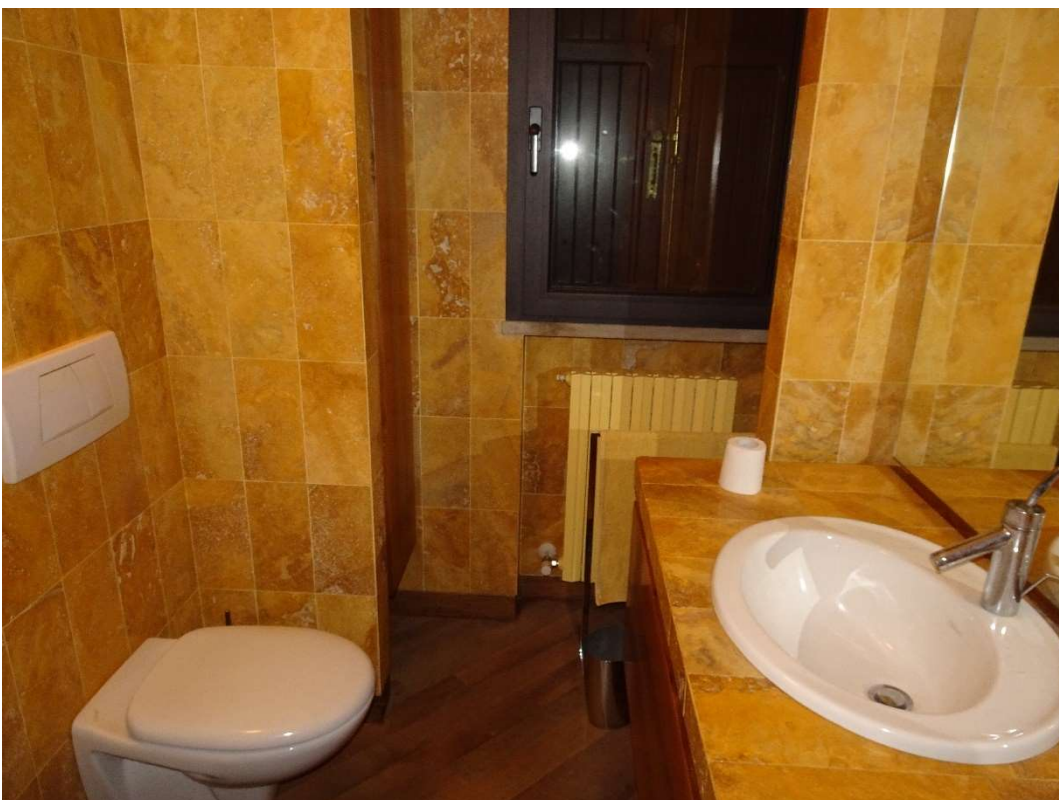


Foto 70_bagno

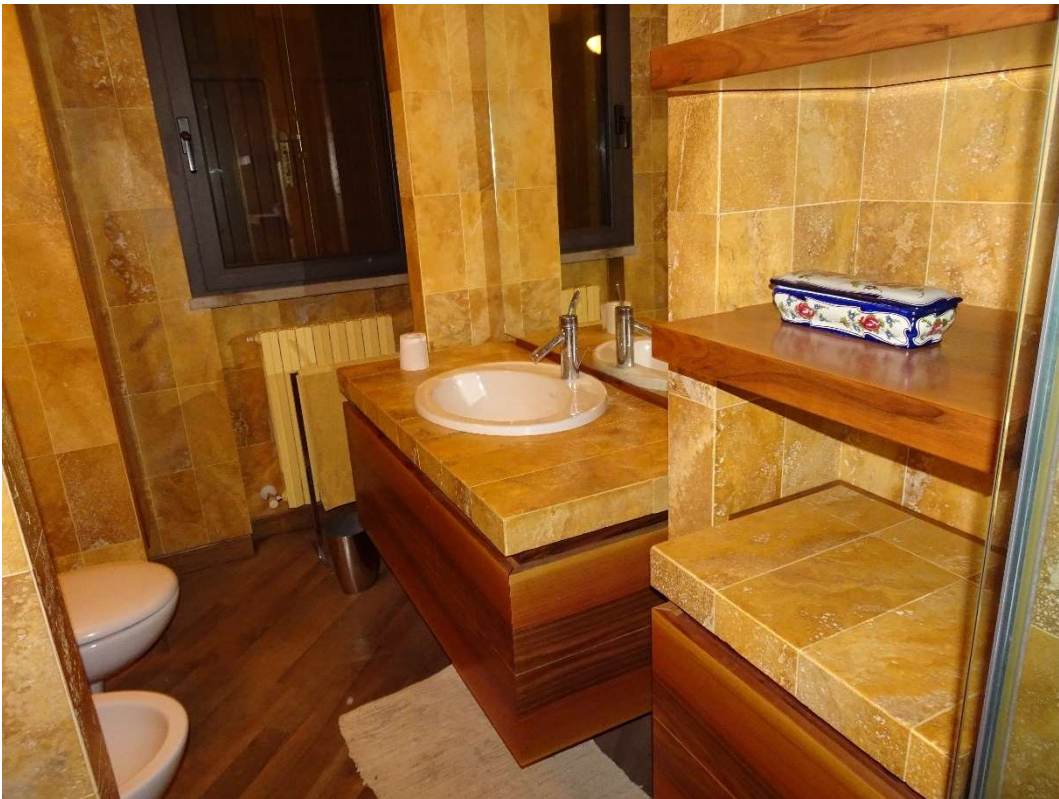


Foto 71_bagno



Foto 72_letto

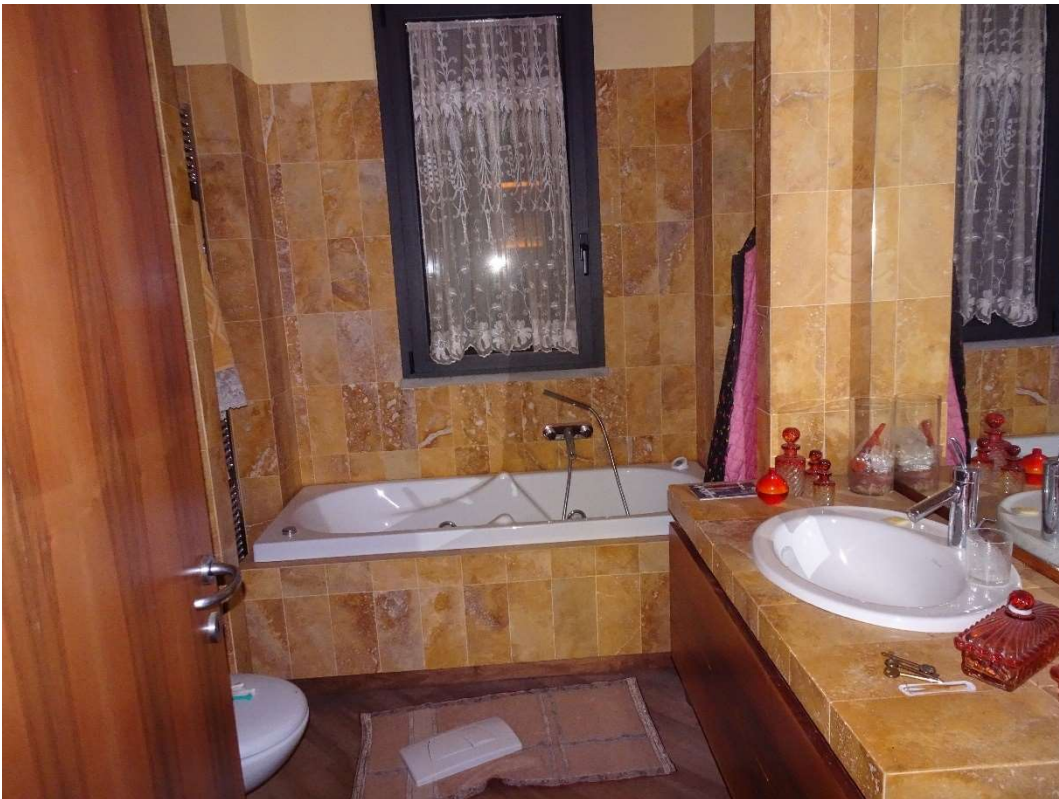


Foto 73_bagno

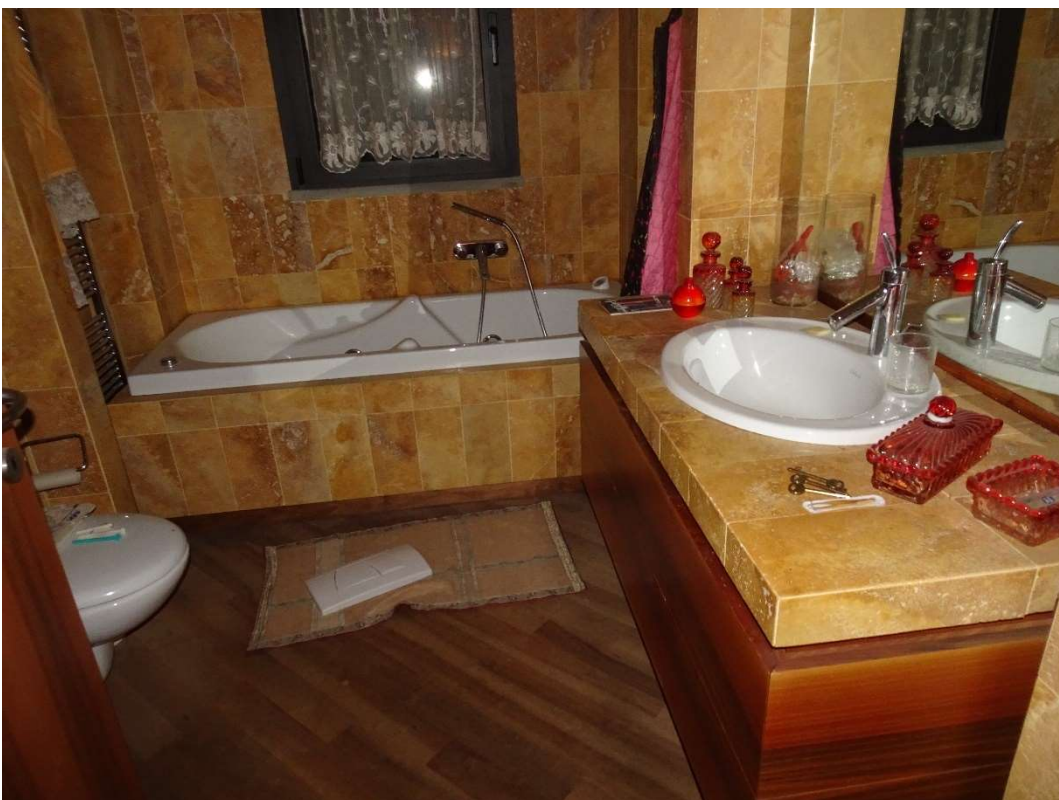


Foto 74_bagno

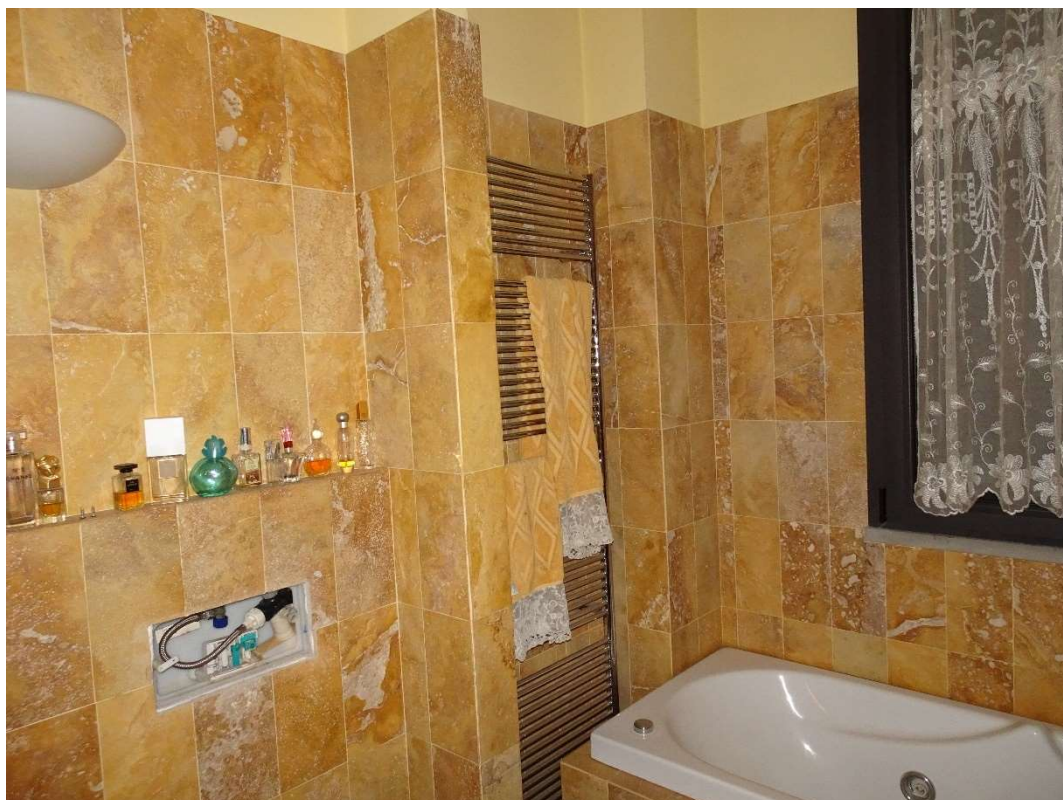


Foto 75_bagno

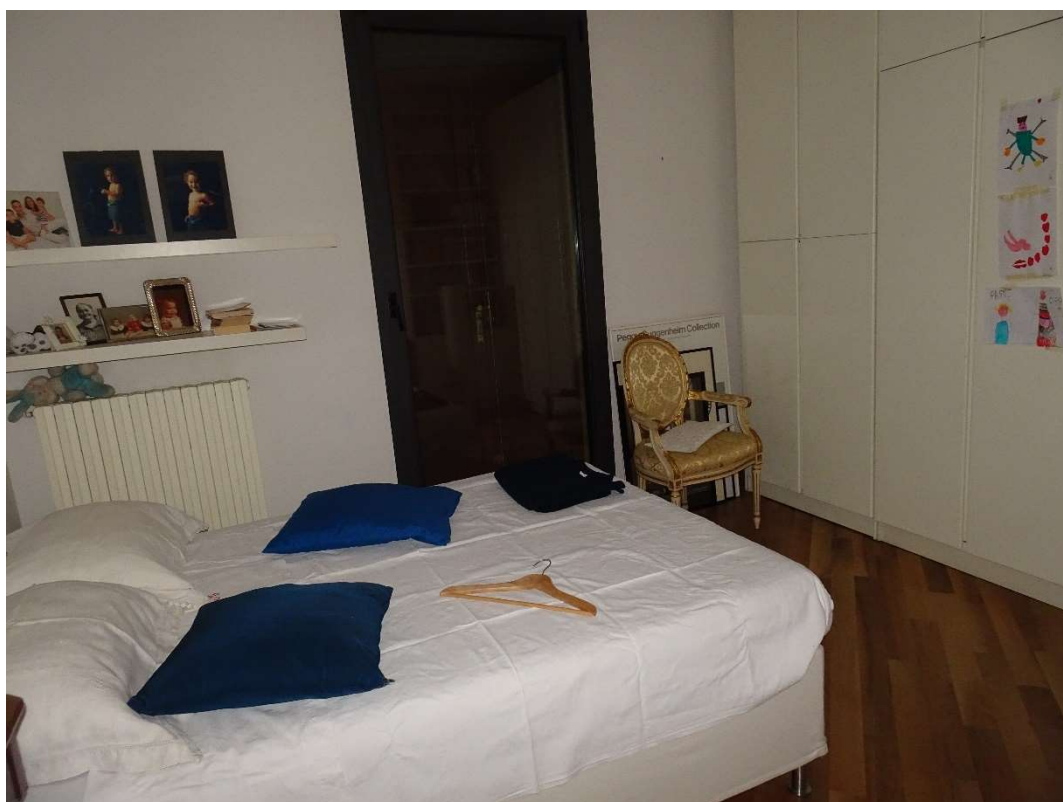


Foto 76_letto



Foto 77_letto



Foto 78_guardaroba



Foto 79_disimpegno

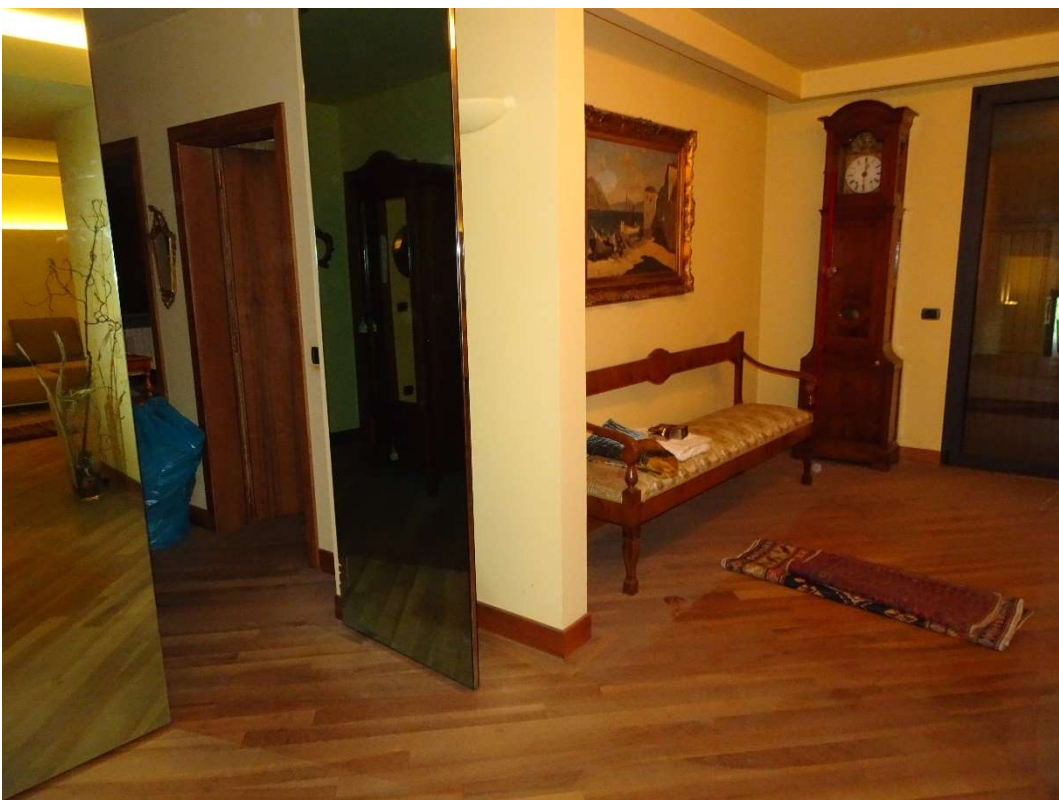


Foto 80_disimpegno



Foto 81_sottotetto



Foto 82_sottotetto



Foto 83_sottotetto

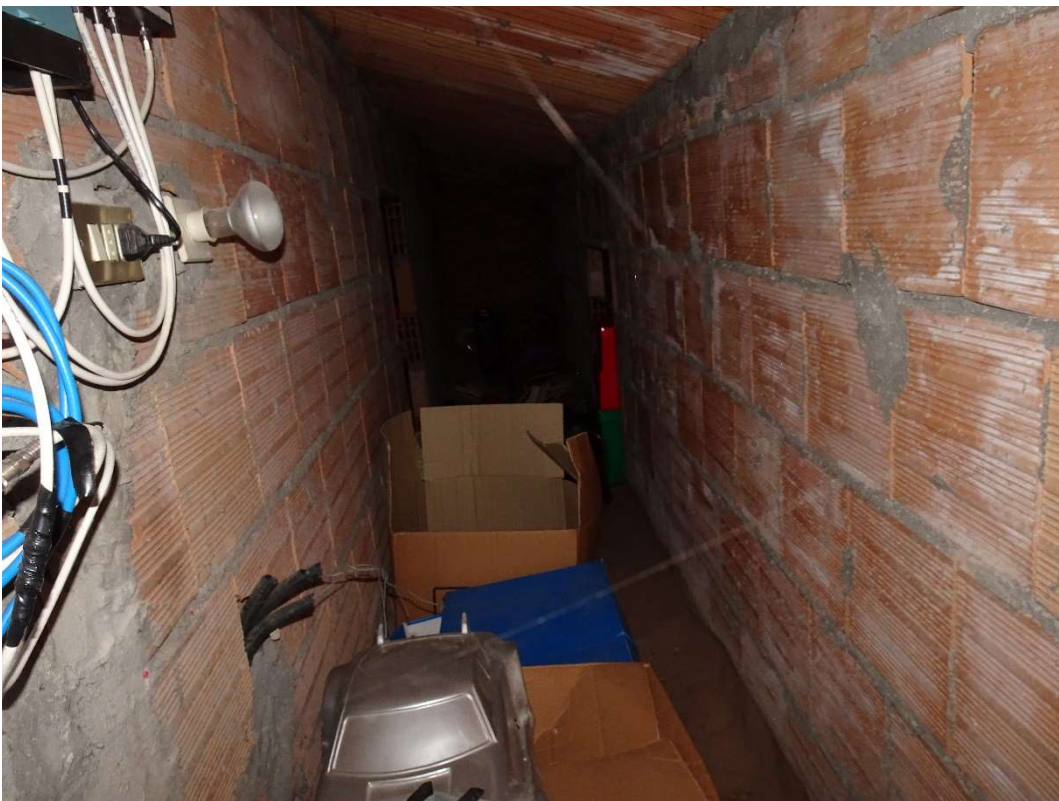


Foto 84_sottotetto



Foto 85_sottotetto

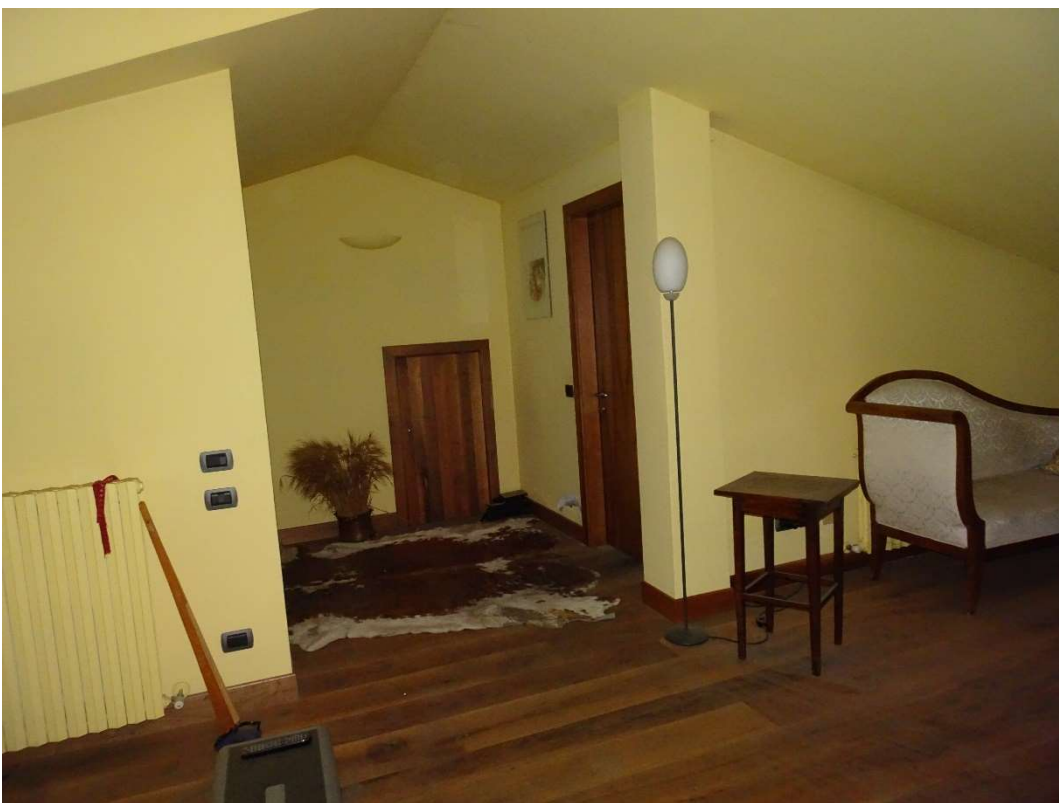


Foto 86_sottotetto



Foto 87_sottotetto

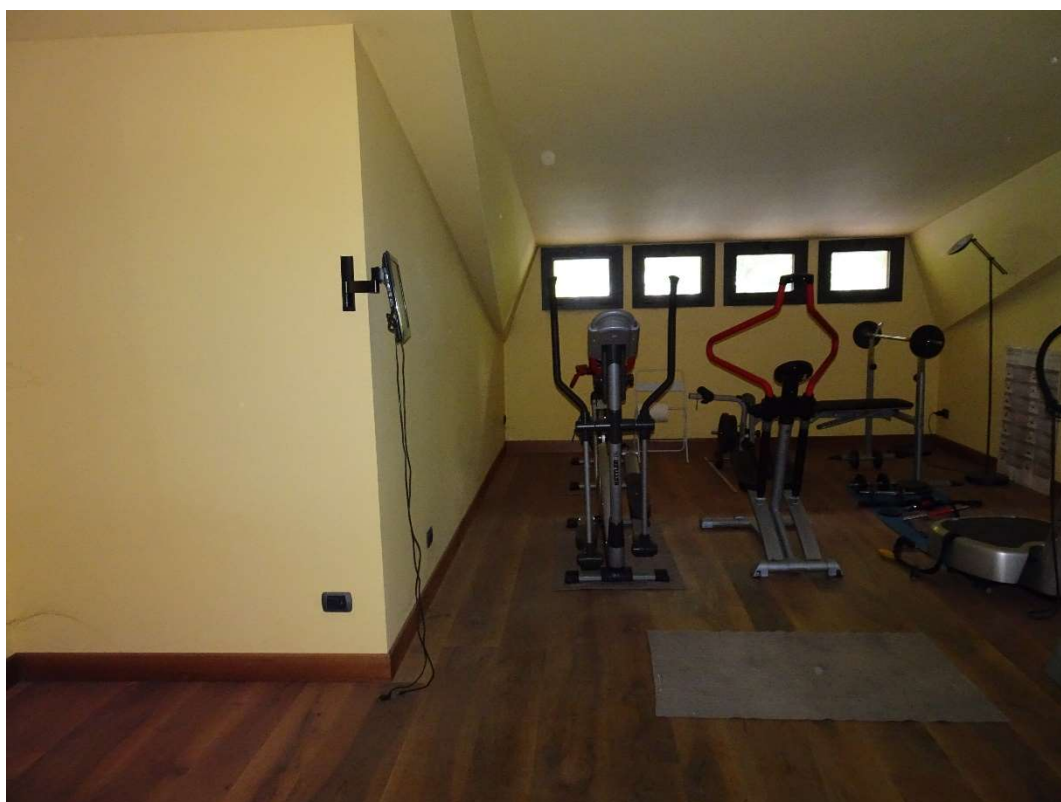


Foto 88_sottotetto



Foto 89_sottotetto



Foto 90_Area estern



Foto 91_area esterna



Foto 92_Area esterna su via murri 8



Foto 93_area esterna



Foto 94_Corte laterale

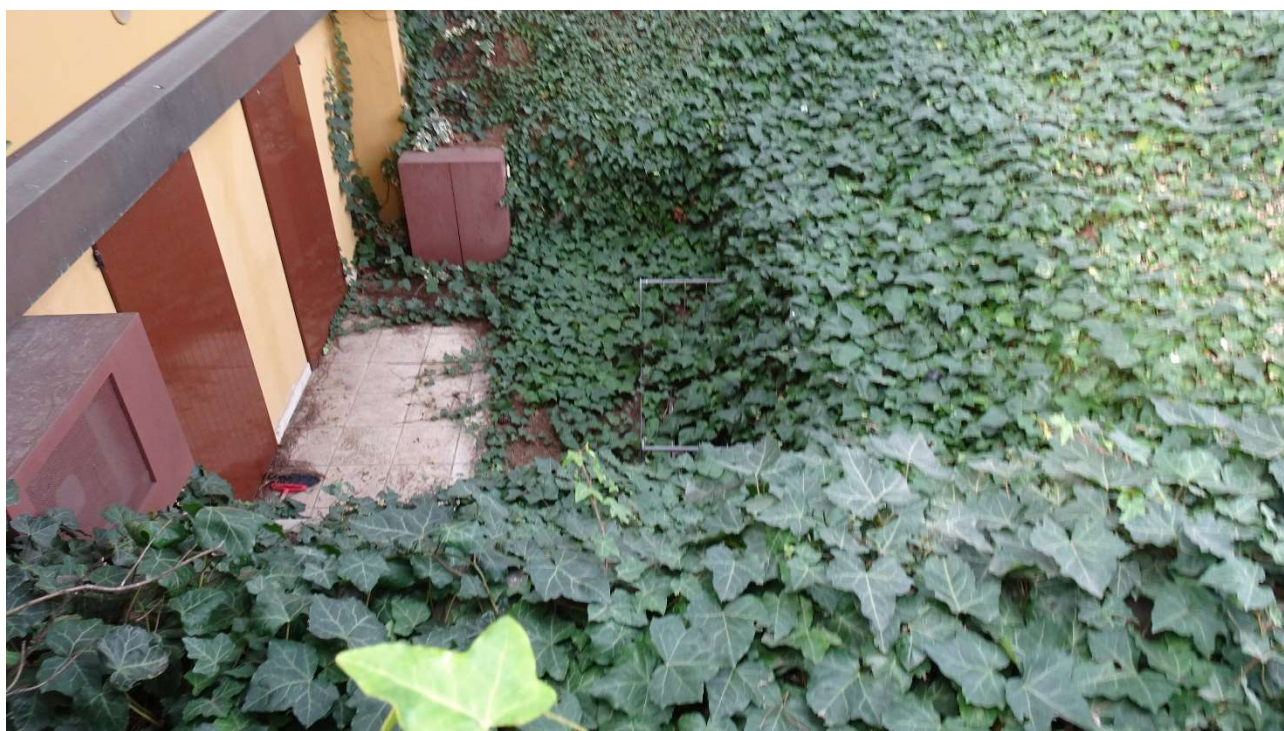


Foto 95_corte laterale



Foto 96_corte